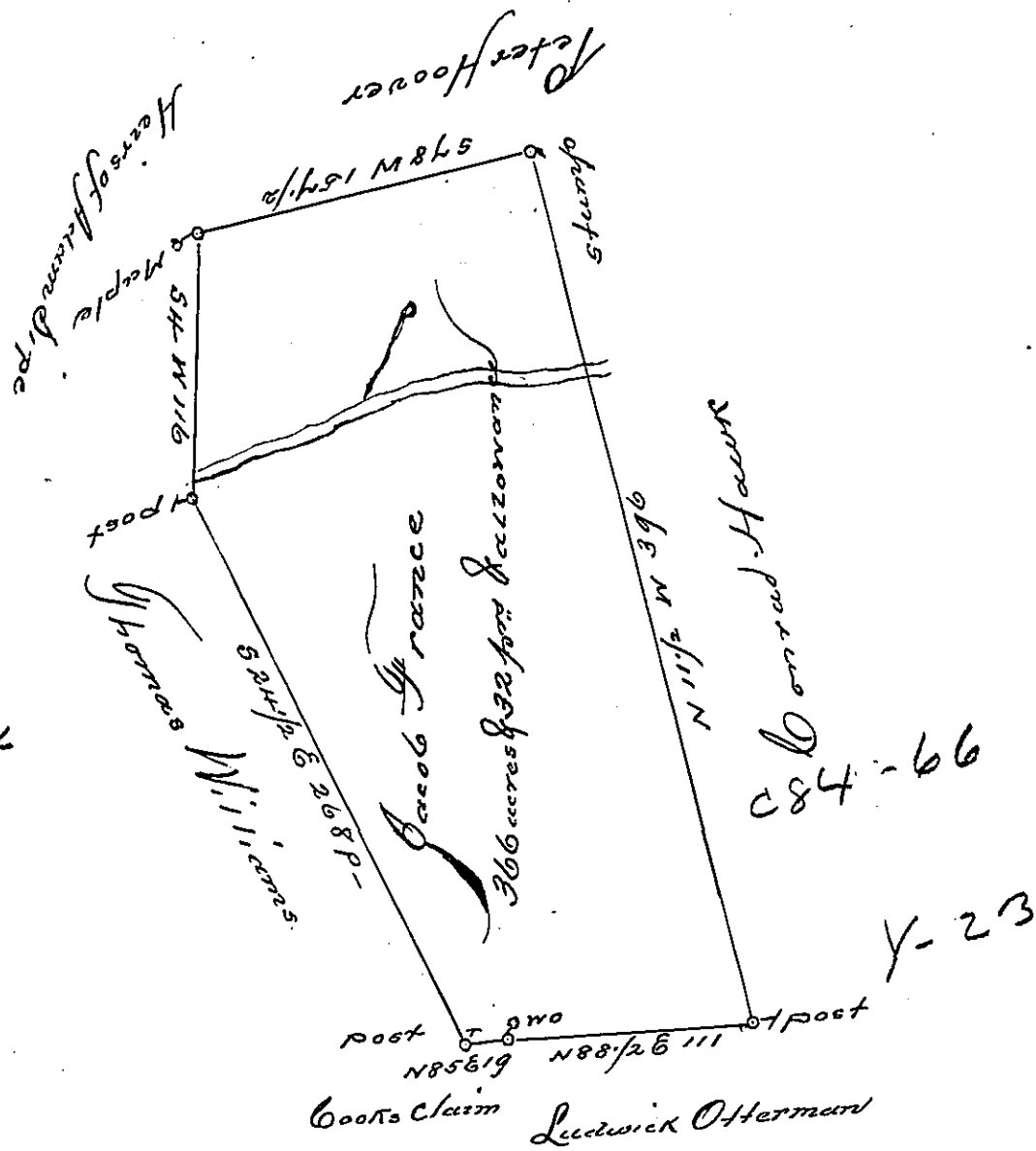


D 2-136



In pursuance of a Warrant bearing date April 24th 1786, Surveyed Nov. 23rd following unto Jacob France the above described Tract of Land, Situated on a branch of Brush Creek in Hempfield Township, Westmoreland County, Containing Three hundred and sixty six acres & 32 perches & allowance of Six for Cent for Roads &c.

To John Lukens Esq. Surveyor General

Benj. Lodge D.S.

Wth to Jacob France in trust &c.

IN TESTIMONY that the above is a copy of the original remaining on file in the Department of Internal Affairs of Pennsylvania, made conformably to an Act of Assembly approved the 16th day of February, 1833, I have hereunto set my Hand and caused the Seal of said Department to be affixed at Harrisburg, this twentieth second day of September, 1904.

George P. Brown
Secretary of Internal Affairs.